



KENNEDY VALVE

UL/FM CHECK VALVES



KENNEDY VALVE



UL/FM CHECK VALVES

Fig. 1126 / 1126A Iron Swing Check
Fig. 806 Wafer Check and
Fig. 726 Grooved Check

UL Listed /FM Approved

Kennedy Swing Check Valves provide reliable backflow prevention in piping systems across a wide range of applications. The valve is available in both resilient-seated and metal-seat configurations, allowing it to meet varying system and performance requirements. All moving components are constructed from corrosion-resistant materials, minimizing wear and extending overall valve service life.



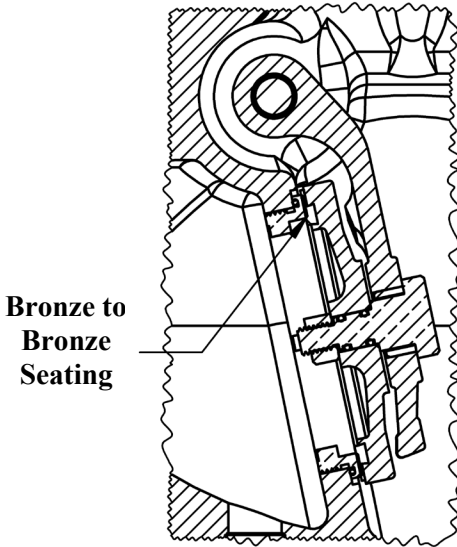
KENNEDY VALVE

Iron Swing Check Valves



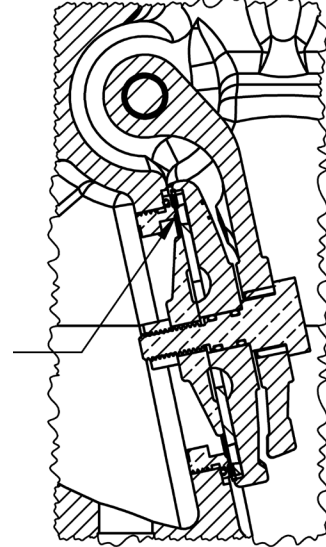
Working Pressure: UL Listed & FM Approved to 175 psi. (2 1/2"-12") **Construction:** Bronze mounted with Bronze Disc or Resilient Disc.

*Two Styles Available
See Next Page for
Further Detail*



**Bronze to
Bronze
Seating**

**FIG. 1126
BRONZE DISC
FLANGED ENDS
SIZE: 2.5" THRU 12"**

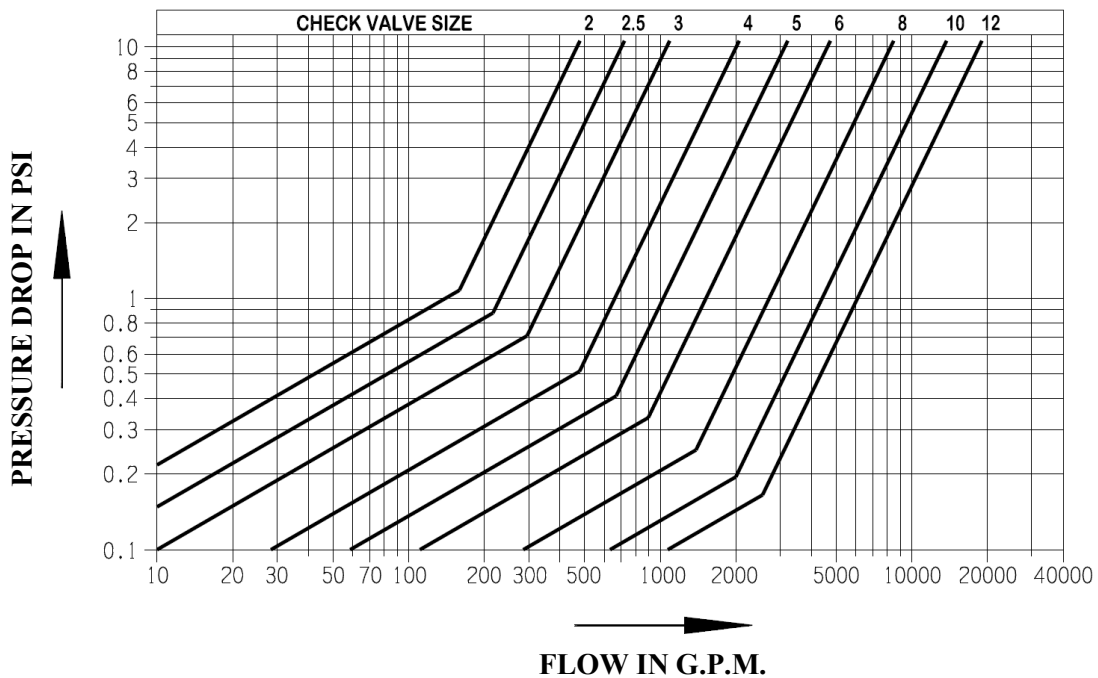


**Rubber Faced
to Bronze
Seating**

**FIG. 1126A
RESILIENT DISC
FLANGED ENDS
SIZE: 2.5" THRU 12"**

FLOW VERSUS PRESSURE DROP

Data Representative of Kennedy Figure 1126 and 1126A Swing Check Valves





KENNEDY VALVE

Iron Swing Check Valves



- Bronze Mounted with:
- Rubber Faced Disc
- or-
- Bronze Faced Disc

FIG. 1126 – FIG. 1126A
Flanged Ends

Approvals: UL Listed / FM Approved - 2 1/2"-12"

Fig. 1126 and 1126A

End Flange Drilling: ANSI Class 125

BODY MARKING

UL ◀FM▶
KENNEDY
SIZE

OPPOSITE SIDE

FIG. 1126 OR 1126A
175

| Common Reference Dimensions & Weight | | | | | | | | | | |
|--------------------------------------|------|------|-------|-------|-----|------|---|----|-----------------|------------|
| Size | A | B | C | D | E | F | G | H | WEIGHT - POUNDS | |
| | | | | | | | | | Fig. 1126 | Fig. 1126A |
| 2½ | 10 | 0.69 | 7 | 6.44 | 7 | 0.41 | ¾ | 10 | 52 | 53 |
| 3 | 10 ¼ | 0.78 | 7 1/2 | 6.85 | 7¾ | 0.44 | ¾ | 8 | 62 | 62 |
| 4 | 13 | 0.99 | 9 | 8.69 | 9 | 0.50 | ¾ | 8 | 114 | 117 |
| 6 | 16 | 1.06 | 11 | 10.51 | 11 | 0.62 | ¾ | 12 | 193 | 196 |
| 8 | 19 | 1½ | 13¾ | 12.56 | 13¾ | 0.75 | ¾ | 15 | 347 | 350 |
| 10 | 22 | 1.22 | 16 | 14.07 | 16¾ | 0.81 | ¾ | 15 | 505 | 512 |
| 12 | 26 | 1.38 | 19 | 16.13 | 18 | 0.88 | ¾ | 15 | 745 | 758 |

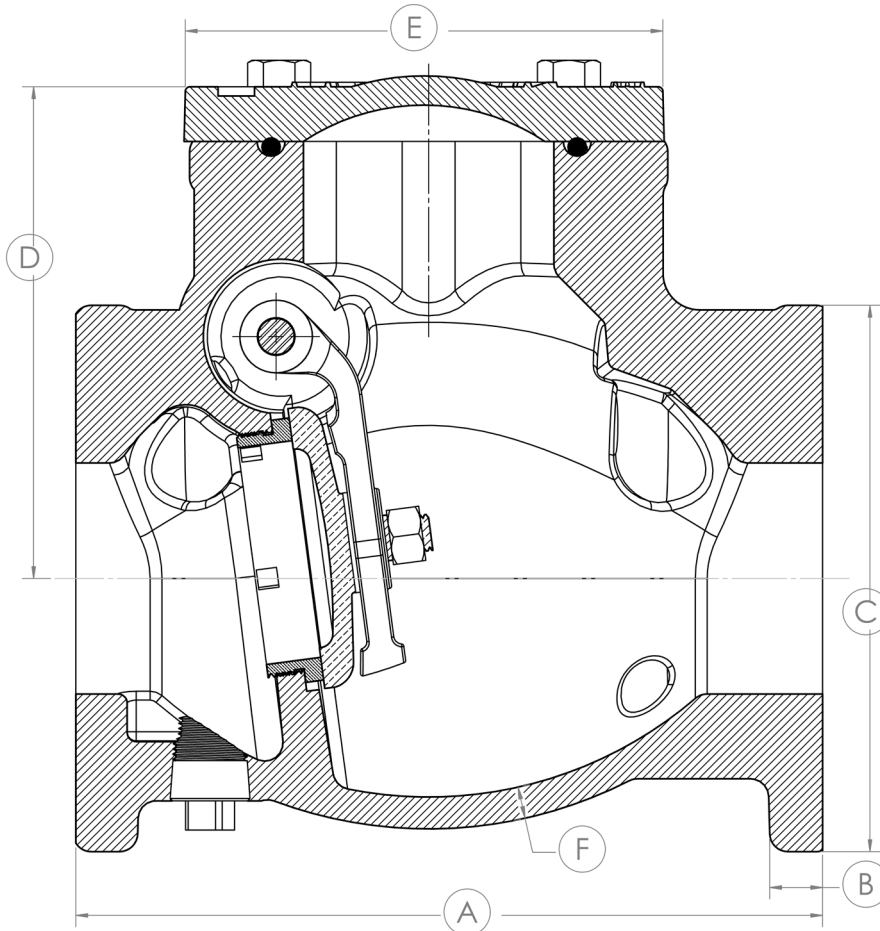


FIG. 1126 & 1126A COMMON REFERENCE DIMENSION 2.5" TO 12"

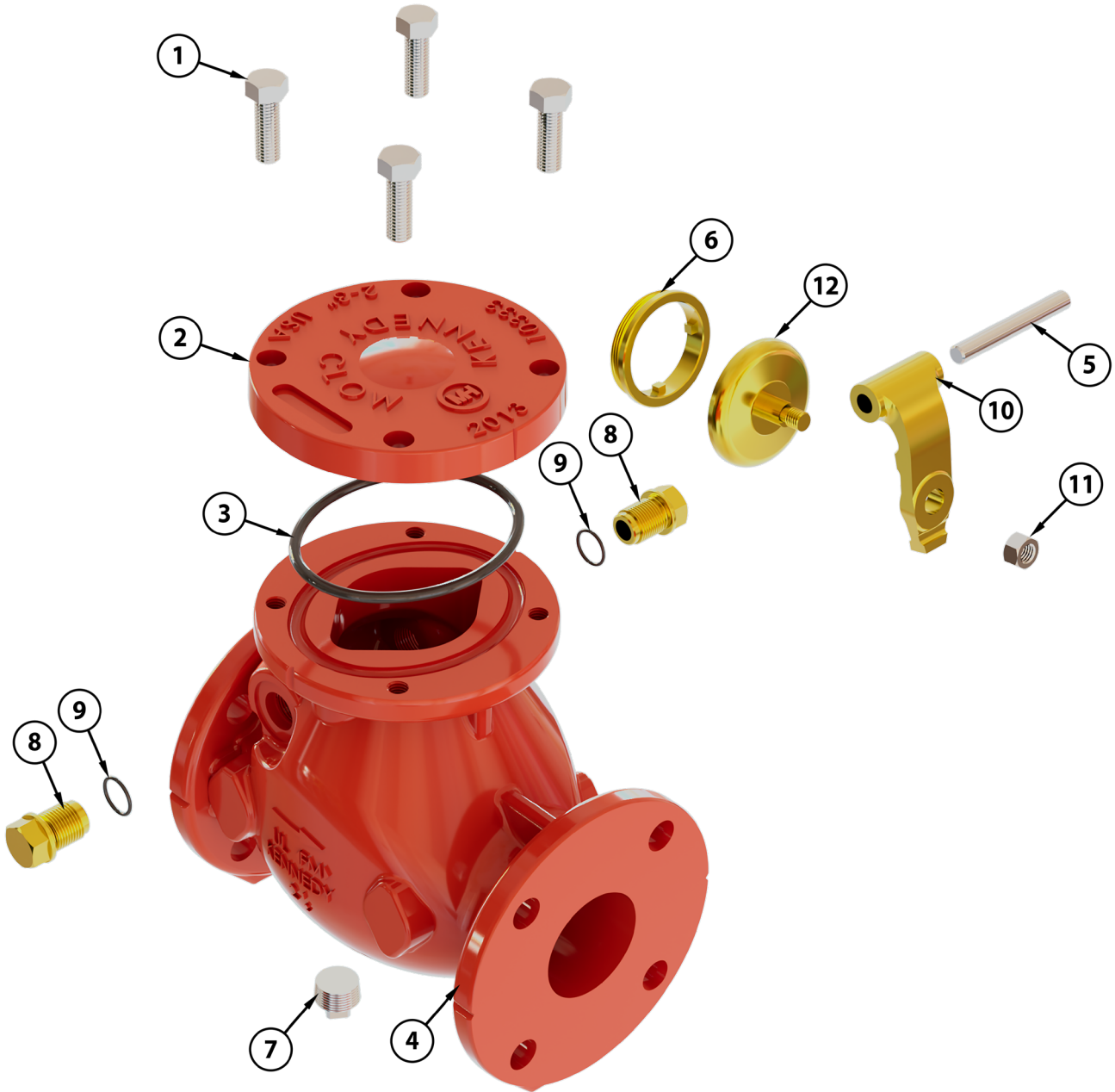


KENNEDY VALVE

Iron Swing Check Valves



FIG. 1126 EXPLODED VIEW OF BRONZE FACE DISC 2.5"-3"



| FIG. 1126 Bronze Face Disc Assembly: 2.5" - 3" | | | |
|--|------------------|-----------------------------|---------------|
| Part No. | Description | Material | ASTM SPEC |
| 1 | Cap Bolts | Stainless Steel | F593 |
| 2 | Cap | Cast Iron | A-126 Class B |
| 3 | Cap O-Ring | Buna N | D2000 |
| 4 | Body | Cast Iron | A-126 Class B |
| 5 | Hinge Pin | Stainless Steel | A-278 (304SS) |
| 6 | Seat Ring | Bronze | B584 |
| 7 | Bottom Plug | Steel Socket 3/4" Pipe Plug | --- |
| 8 | Side Plug | Bronze | B371 |
| 9 | Side Plug O-Ring | Buna N | D2000 |
| 10 | Hinge - Bronze | Bronze | B584 |
| 11 | Disc Nut | Stainless Steel | F594 |
| 12 | Disc - Bronze | Bronze | B584 |

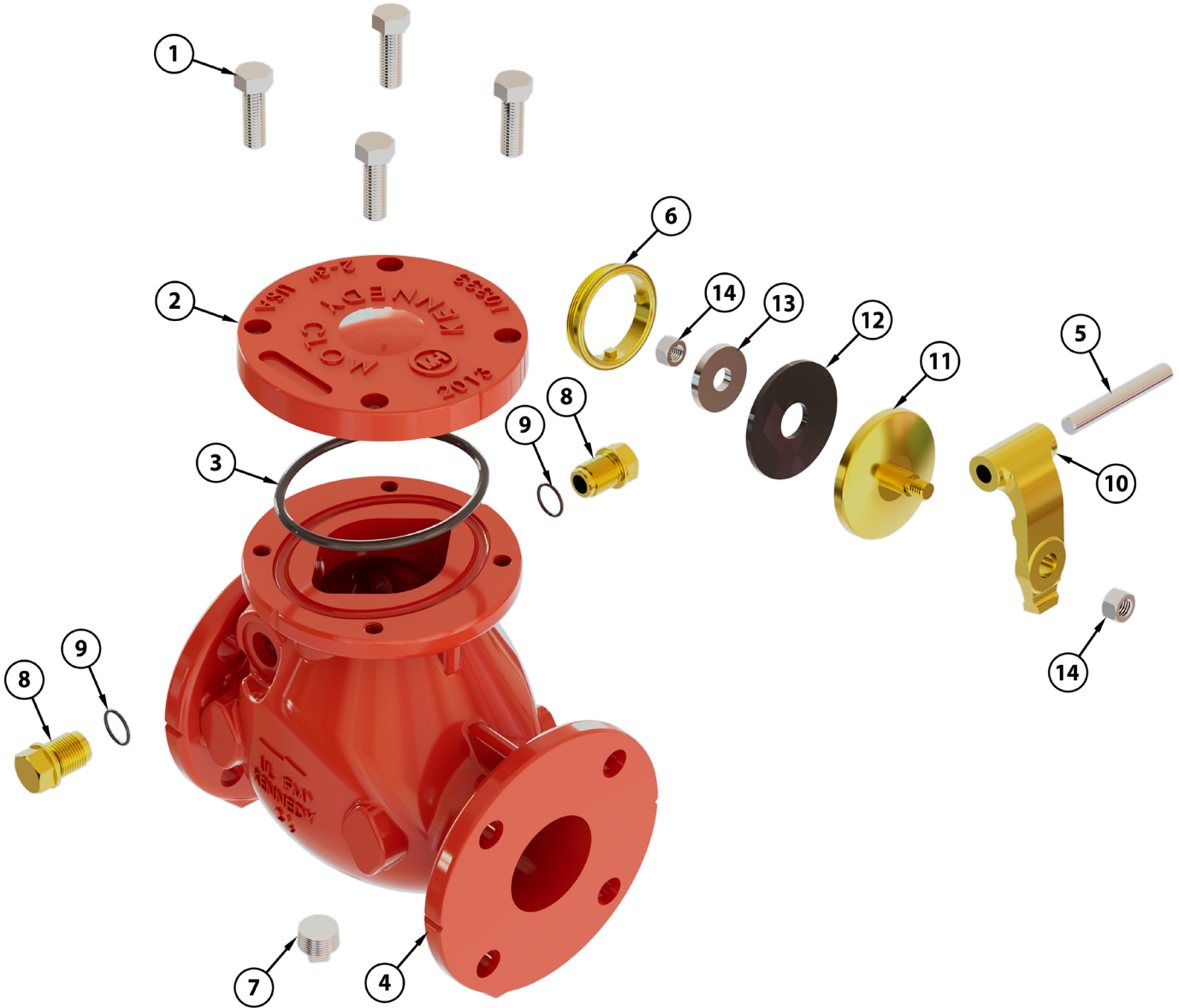


KENNEDY VALVE

Iron Swing Check Valves



FIG. 1126A EXPLODED VIEW OF RUBBER FACE DISC 2.5" - 3"



| FIG. 1126A Rubber Face Disc Assembly: 2.5" - 3" | | | |
|---|------------------------------|-----------------------------|---------------|
| Part No. | Description | Material | ASTM SPEC |
| 1 | Cap Bolts | Stainless Steel | F593 |
| 2 | Cap | Cast Iron | A-126 Class B |
| 3 | Cap O-Ring | Buna N | D2000 |
| 4 | Body | Cast Iron | A-126 Class B |
| 5 | Hinge Pin | Stainless Steel | A-278 (304SS) |
| 6 | Seat Ring | Bronze | B584 |
| 7 | Bottom Plug | Steel Socket 3/4" Pipe Plug | --- |
| 8 | Side Plug | Bronze | B371 |
| 9 | Side Plug O-Ring | Buna N | D2000 |
| 10 | Hinge - Bronze | Bronze | B584 |
| 11 | Disc Holder - Bronze | Bronze | B584 |
| 12 | Rubber Disc | Rubber | --- |
| 13 | Disc Plate - Stainless Steel | Bronze | B584 |
| 14 | Disc Nut (2 Req'd) | Stainless Steel | F594 |

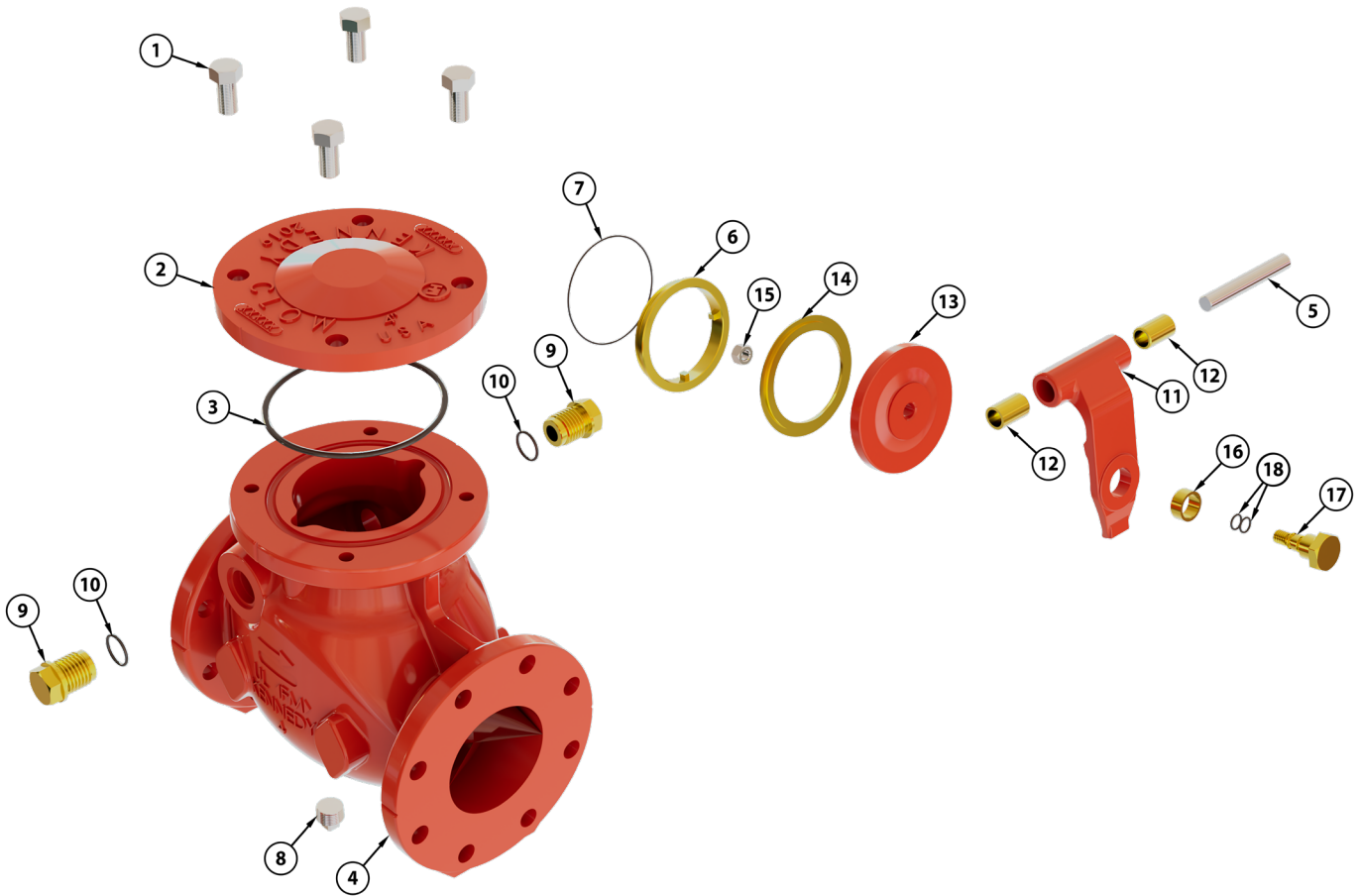


KENNEDY VALVE

Iron Swing Check Valves



FIG. 1126 EXPLODED VIEW OF BRONZE FACE DISC 4"-12"



| FIG. 1126 Bronze Face Disc Assembly: 4" - 12" | | | |
|---|-------------------|-----------------------------|---------------|
| Part No. | Description | Material | ASTM SPEC |
| 1 | Cap Bolts | Stainless Steel | F593 |
| 2 | Cap | Cast Iron | A-126 Class B |
| 3 | Cap O-Ring | Buna N | D2000 |
| 4 | Body | Cast Iron | A-126 Class B |
| 5 | Hinge Pin | Stainless Steel | A-278 (304SS) |
| 6 | Seat Ring | Bronze | B584 |
| 7 | Seat Ring O-Ring | Buna N | D2000 |
| 8 | Bottom Plug | Steel Socket 3/4" Pipe Plug | --- |
| 9 | Side Plug | Bronze | B371 |
| 10 | Side Plug O-Ring | Buna N | D2000 |
| 11 | Hinge - Cast Iron | Cast Iron | A-126 Class B |
| 12 | Bushing | Sintered Bronze | --- |
| 13 | Disc - Cast Iron | Cast Iron | A-126 Class B |
| 14 | Disc Ring | Bronze | B584 |
| 15 | Disc Nut | Stainless Steel | F594 |
| 16 | Disc Bolt Bushing | Sintered Bronze | --- |
| 17 | Disc Bolt | Bronze | B371 |
| 18 | Disc Bolt O-Rings | Buna N | D2000 |

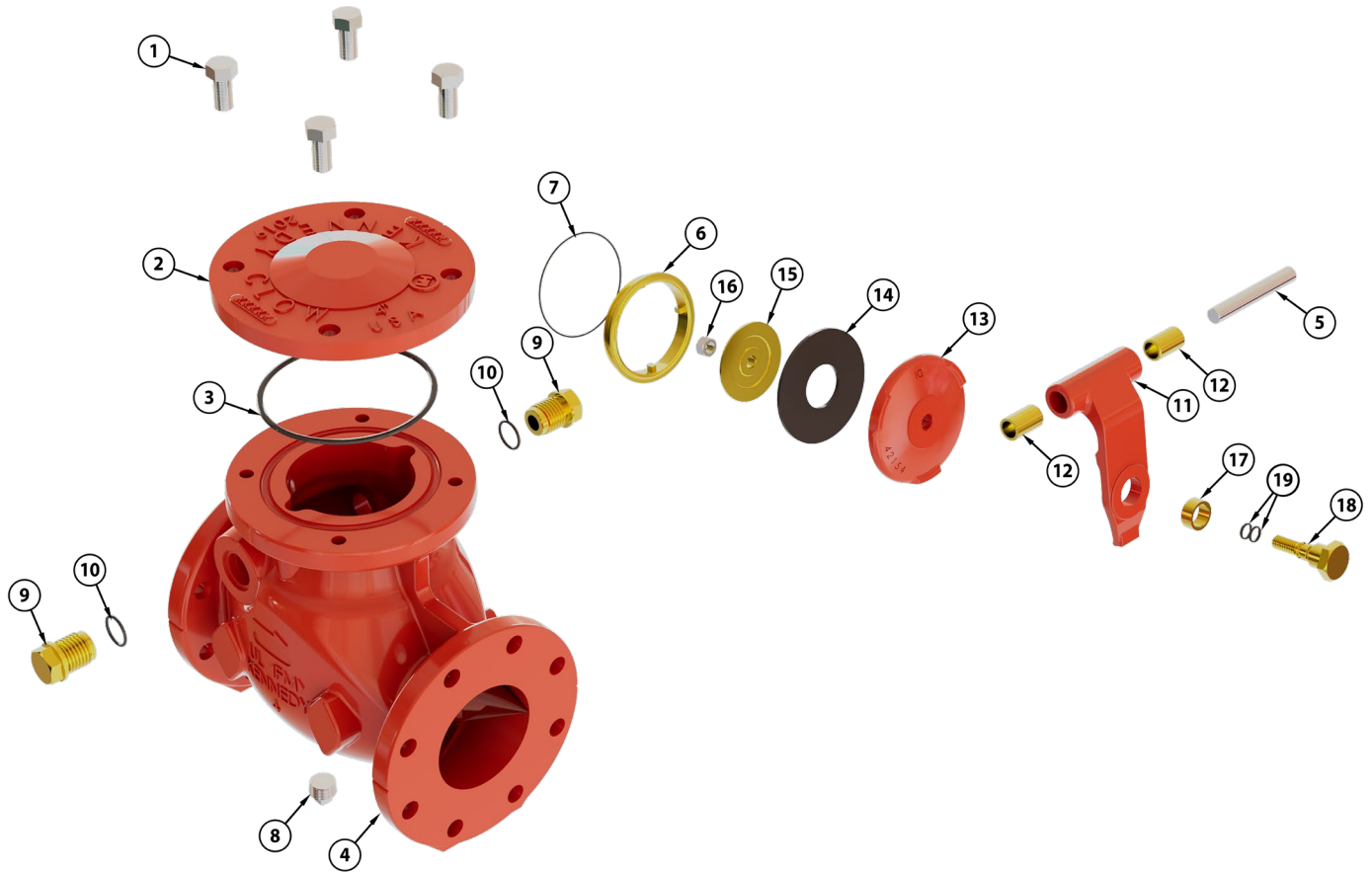


KENNEDY VALVE

Iron Swing Check Valves



FIG. 1126A EXPLODED VIEW OF RUBBER FACE DISC 4"-12"



| FIG. 1126A Rubber Face Disc Assembly: 4" - 12" | | | |
|--|-------------------------|-----------------------------|---------------|
| Part No. | Description | Material | ASTM SPEC |
| 1 | Cap Bolts | Stainless Steel | F593 |
| 2 | Cap | Cast Iron | A-126 Class B |
| 3 | Cap O-Ring | Buna N | D2000 |
| 4 | Body | Cast Iron | A-126 Class B |
| 5 | Hinge Pin | Stainless Steel | A-278 (304SS) |
| 6 | Seat Ring | Bronze | B584 |
| 7 | Seat Ring O-Ring | Buna N | D2000 |
| 8 | Bottom Plug | Steel Socket 3/4" Pipe Plug | --- |
| 9 | Side Plug | Bronze | B371 |
| 10 | Side Plug O-Ring | Buna N | D2000 |
| 11 | Hinge - Cast Iron | Cast Iron | A-126 Class B |
| 12 | Bushing | Sintered Bronze | --- |
| 13 | Disc Holder - Cast Iron | Cast Iron | A-126 Class B |
| 14 | Rubber Disc | Rubber | --- |
| 15 | Disc Plate - Bronze | Bronze | B584 |
| 16 | Disc Nut | Stainless Steel | F594 |
| 17 | Disc Bolt Bushing | Sintered Bronze | --- |
| 18 | Disc Bolt | Bronze | B371 |
| 19 | Disc Bolt O-Rings | Buna N | D2000 |



KENNEDY VALVE

KENNEDY VALVE FIGURE 806 WAFER CHECK VALVES



UL Listed and FM Approved to 300PSI

- Sizes 4, 6, and 8 inch
- Ductile Iron Body
- Aluminum Bronze Clapper and Seat Ring
- Resilient Seating
- "O" Ring End Seals
- Spring Loaded Disc
- All Components Lead Free
- Fusion Bonded Epoxy Coated Interior and Exterior.

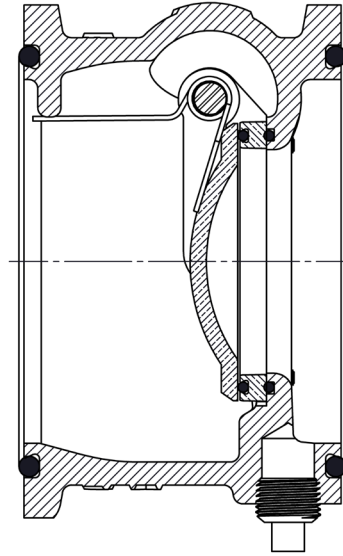
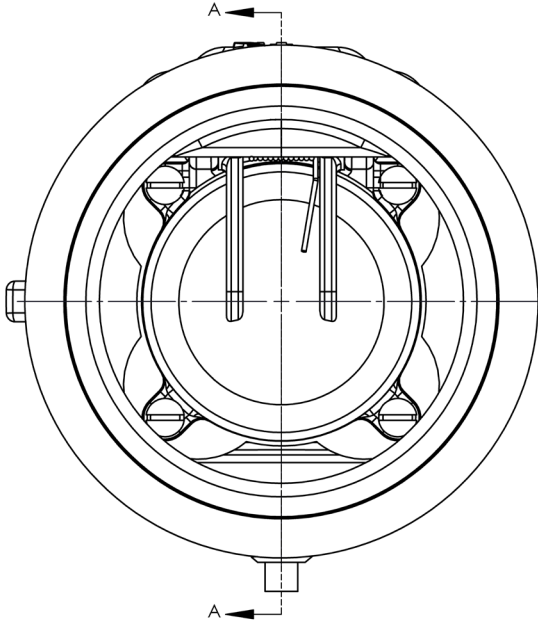
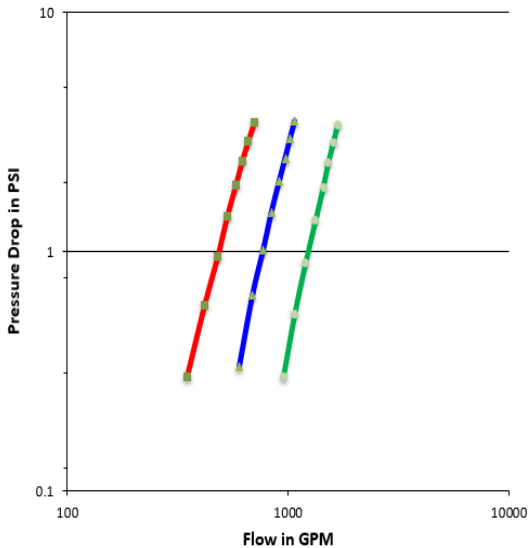


Figure 806 Flow Versus Pressure Drop



Compact, for installation between standard ASME B16.1 class 125/150 flanges.
 Mounting between class 250/300 flanges requires use of spacers.
 Kennedy WAFER CHECK VALVES have spring loaded aluminum bronze clappers, resilient seating, and utilize "O" rings rather than gaskets for end seals.

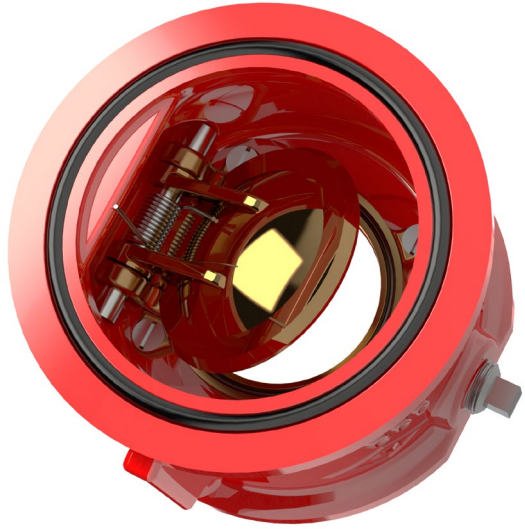
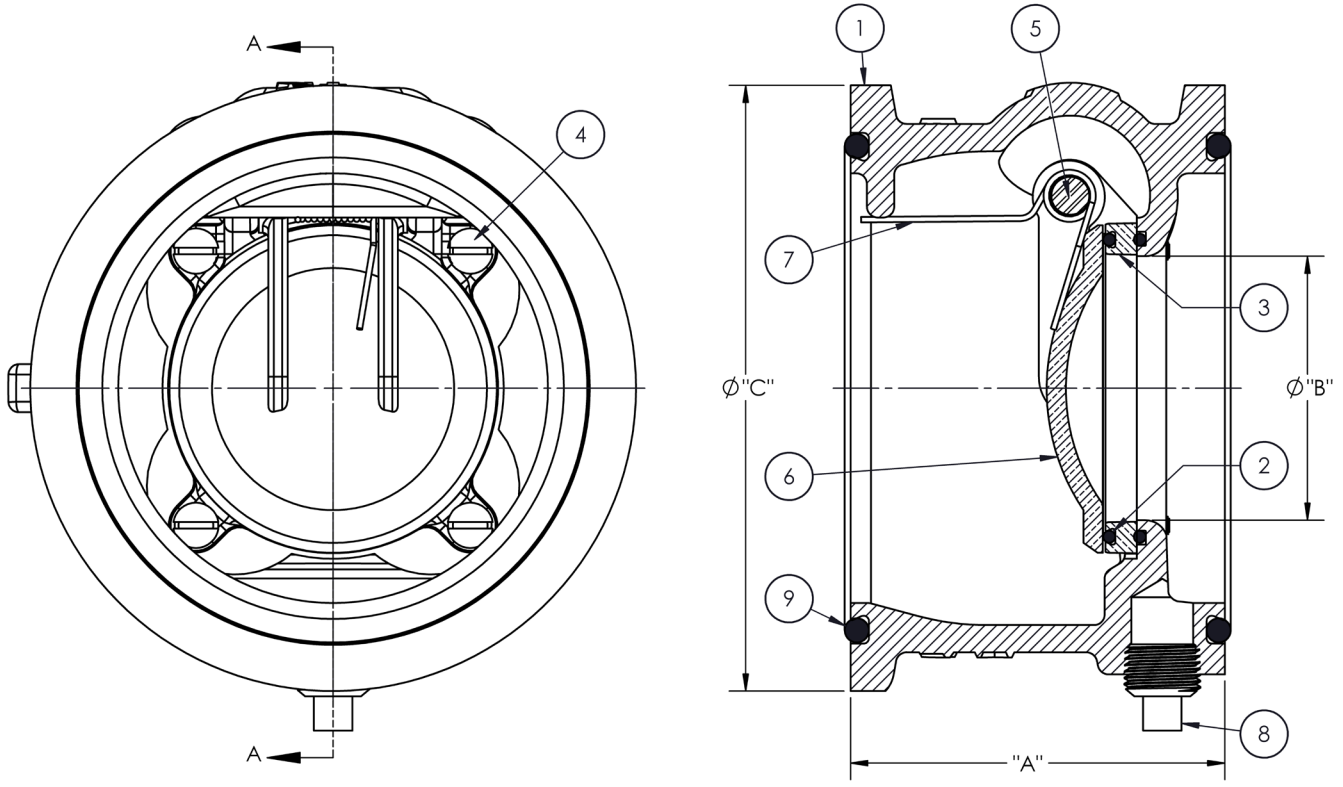


KENNEDY VALVE

Wafer Check Valves Technical / Dimensional Data



| ITEM NO. | DESCRIPTION | MATERIAL | QTY |
|----------|--------------------|--|-------------------|
| 1 | Body | Ductile Iron, ASTM A536 grade 70-50-5 | 1 |
| 2 | Oring | Buna-N | 2 |
| 3 | Seat Ring | Aluminum Bronze, ASTM B806 C95400/C95500 | 1 |
| 4 | Screw | 18-8 Stainless Steel | 4 (8" SIZE HAS 6) |
| 5 | Pin | 18-8 Stainless Steel | 1 |
| 6 | Clapper | Aluminum Bronze, ASTM B806 C95400/C95500 | 1 |
| 7 | Spring | 302 Stainless Steel | 1 |
| 8 | 1/2" NPT Pipe Plug | Steel | 1 (4" SIZE ONLY) |
| 9 | Oring | Buna-N | 2 |



| SIZE | "A" | "B" | "C" | WT (lbs) |
|------|------|------|-------|----------|
| 4" | 4.25 | 3.00 | 6.88 | 12 |
| 6" | 4.25 | 4.50 | 8.75 | 18 |
| 8" | 4.25 | 6.00 | 11.00 | 26 |



KENNEDY VALVE

KENNEDY VALVE FIGURE 726

GROOVED CHECK VALVES



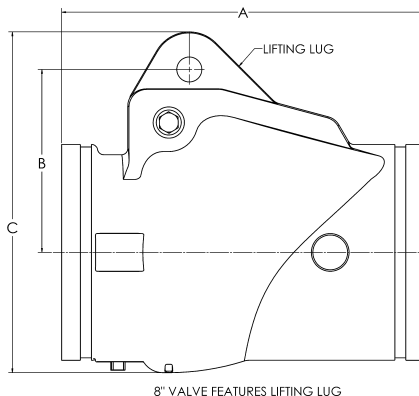
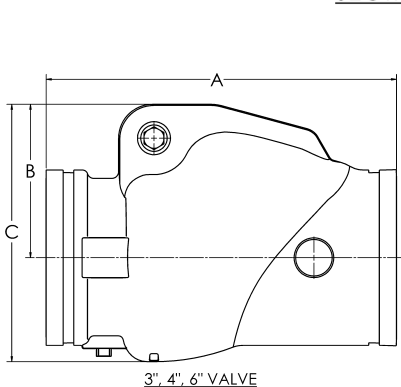
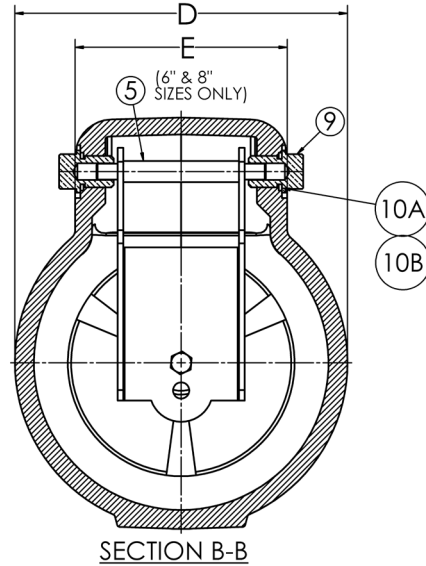
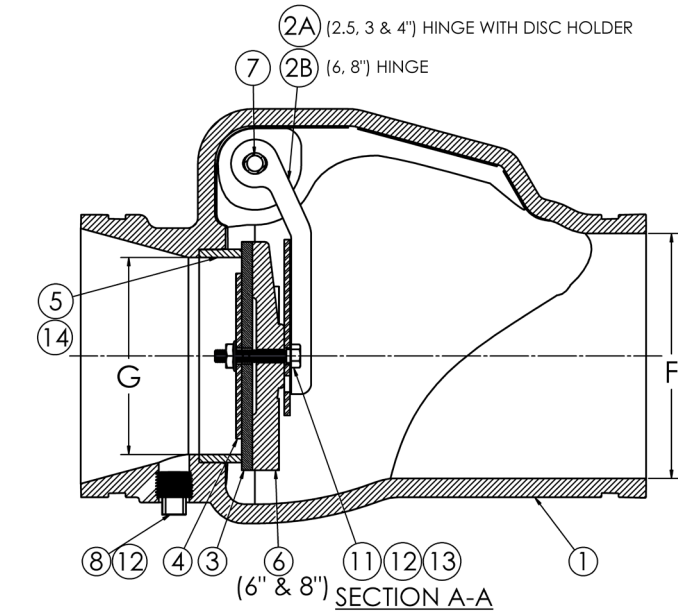
Kennedy Valve Figure 726 is a UL Listed and FM approved to 300 PSI Grooved End Check Valve. It is a lightweight unit that is intended to be easily installed with IPS grooved couplings. They may be installed either with the flow in a vertical position (flow up) or horizontally. Upon request valves can have a 1/2" NPT connection on the inlet side for installation of a 1/2" ball drip.

| SIZE | A | B | C | D | E | F | G |
|------|-------|-----|------|-----|-----|-----|-----|
| 2.5 | 8.63 | 3.1 | 5.6 | 4.8 | 4.0 | 2.5 | 2.0 |
| 3 | 9.13 | 3.4 | 6.0 | 5.3 | 4.0 | 3.0 | 2.4 |
| 4 | 10.00 | 3.8 | 6.8 | 6.0 | 4.0 | 4.0 | 3.0 |
| 6 | 13.28 | 6.0 | 10.0 | 7.9 | 5.0 | 6.0 | 4.6 |
| 8 | 14.50 | 8.8 | 13.6 | 9.6 | 5.0 | 8.0 | 6.2 |



| Mark | Qty | Part Name | Material | Remarks |
|------|-----|-----------------------------------|-------------------------------|--------------|
| 1 | 1 | VALVE BODY | DUCTILE IRON | |
| 2A | 1 | HINGE WITH DISC HOLDER (INTEGRAL) | STAINLESS STEEL (SS304) | SIZE 2.5- 4" |
| 2B | 1 | HINGE | STAINLESS STEEL (SS304) | SIZE 5 & 8" |
| 3 | 1 | RESILIENT DISC | EPDM (2.5-6"), BUNA N (8") | |
| 4 | 1 | DISC PLATE | STAINLESS STEEL (SS304) | |
| 5 | 1 | SEAT RING | BRASS - TIN COATED | |
| 6 | 1 | DISC HOLDER | DUCTILE IRON | SIZE 5 & 8" |
| 7 | 1 | HINGE PIN | STAINLESS STEEL (SS304, 18-8) | |
| 8 | 1 | 1/2" PIPE PLUG | STEEL | |
| 9 | 2 | STOP PLUG | STAINLESS STEEL (SS304, 303) | |
| 10A | 2 | O-RING - DASH 110 | UL NITRILE | SIZE 2.5- 4" |
| 10B | 1 | O-RING - DASH 113 | UL NITRILE | SIZE 6 & 8" |
| 11 | 1 | NUT | STAINLESS STEEL (18-8) | |
| 12 | 1 | BOLT | STAINLESS STEEL (18-8) | |
| 13 | 1 | SEALANT | | |
| 14 | 1 | SEALANT | | |
| 15 | 1 | SPACER | BRASS 1/2 PIPE | SIZE 6 & 8" |

NOTE: REFER TO BILL OF MATERIAL FOR DRAWINGS AND SPECIFICATION SIZES OF HARDWARE.



| BODY MARKING | |
|-------------------------|----------------------|
| OTHER SIDE | THIS SIDE |
| 300W Size UL YEAR | 726 FM KENNEDY |
| ← | → |